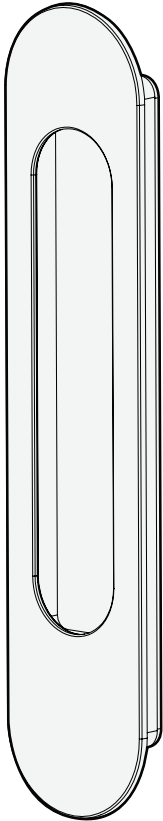




## Contents Inside Package



x1



x2  
No. 6  
3/4



x2

Please ensure you have received the correct goods before installation. Mardeco International Ltd takes no responsibility for incorrect product being fitted.

Mardeco International Ltd retains the right to change products and specifications without notice.

Copyright © 2012 Mardeco International Ltd. All rights reserved. For full Terms & Conditions please visit our website.

[www.mardeco.co.nz](http://www.mardeco.co.nz)

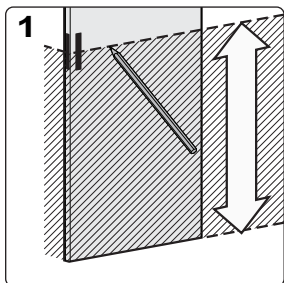


Scan QR code to view a step by step installation video

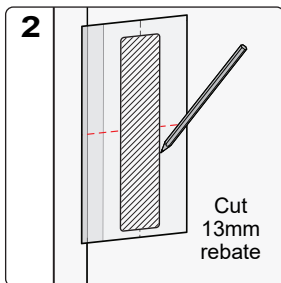


## 9002 Flush Pull Installation Instructions

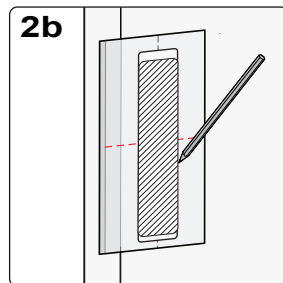




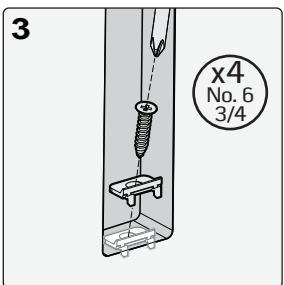
**1**  
Mark midline on the face of the door. Choose a height that will be comfortable for all users to reach.



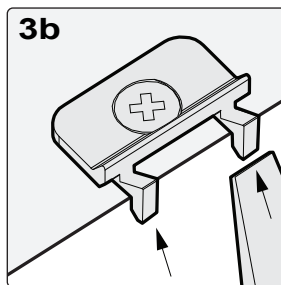
**2**  
Wood Cutout: Remove middle section of flush pull template, position for desired backset and mark cutout outline. Use midline as height reference. Cut 13mm rebate



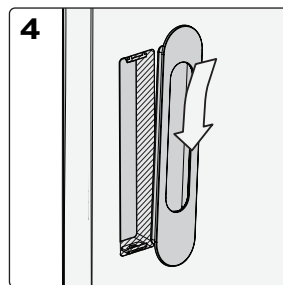
**2b**  
Aluminium Cutout: Match midline with template midline and position for desired backset. Mark aluminium cutout outline. Cut through aluminium.



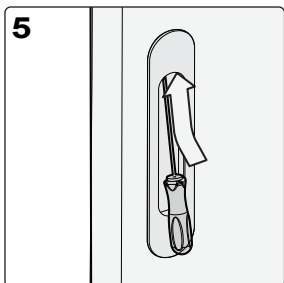
**3**  
For wooden doors: install woodfix brackets at top and bottom of cutout.



**3b**  
Fix bracket in centre of the cutout, ensuring that the tabs are hanging off the lip of the cutout. Once screw is fitted, snap off positioning tabs.



**4**  
Insert flush pull into cavity. Push in and down so it grips onto the bottom bracket or edge.



**5**  
Use Mardeco hex tool to tighten grub screw inside top of flush pulls. Ensure they are fitted firmly.

**Mardeco International Ltd.**  
PO Box 131  
Whangaparaoa 0943  
Auckland, New Zealand  
Phone: +64 (0) 9 428 0658  
Email: [info@mardeco.co.nz](mailto:info@mardeco.co.nz)  
Web: [www.mardeco.co.nz](http://www.mardeco.co.nz)

**mardeco**<sup>®</sup>  
international ltd  
*we handle the best*

